

Marker Arm Valve

Marker Arm Valve

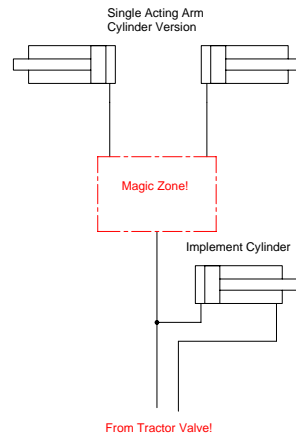
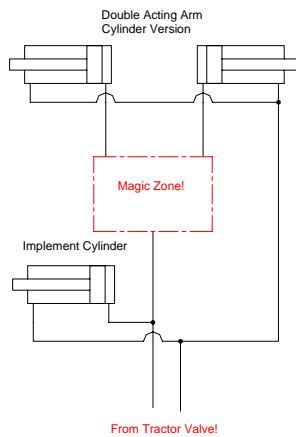
A valve that automates the raising and lowering of marker arms with no extra valving required. When the operator raises or lowers the implement, the arms stroke to their opposite positions. One's up the others down.

Installation is simple. Just tee the valve to the implement lift/lower ram and fit a hose to each arm cylinder from the valve. (3 hoses) The 2 independent marker rams then react automatically to the implement move.

This particular valve has some other special attributes;

- 1/ Prevents the arm from creeping when up.
- 2/ Both arms can be placed in travel position without any hassle.
- 3/ Simple, well priced and we have them.

Obviously, it can be used for other sequence applications as well.



Specifications

Maximum working pressure : 2500 PSI
 Maximum flow rate : 7&1/2 lpm
 Ports : 3/4 UNO

Price \$ -00 list

(Trade customer discounts apply)



Ph 07 847 3487

Email sales@hydraulicwholesalers.co.nz

Fax 07 847 7521

www.hydraulicwholesalers.co.nz

Monday, August 29,